

Profile – The Libraries of City Council District 8

Bradham-Brooks



(904) 765-5402
1755 Edgewood Ave. W 32208

Hours:

Monday: 10 a.m. - 6 p.m.
Tuesday: 10 a.m. - 6 p.m.
Wed.: 1 p.m. - 9 p.m.
Thurs.: 1 p.m. - 9 p.m.
Friday: 10 a.m. - 6 p.m.
Saturday: 10 a.m. - 6 p.m.
Sunday: CLOSED

Dallas Graham



(904) 630-0922
2304 Myrtle Ave. N. 32209

Hours:

Monday: 10 a.m. - 6 p.m.
Tuesday: 12 p.m. - 8 p.m.
Wednesday: 10 a.m. - 6 p.m.
Thursday: 12 p.m. - 8 p.m.
Friday: 10 a.m. - 6 p.m.
Saturday: 10 a.m. - 6 p.m.
Sunday: CLOSED

Highlands



(904) 757-7702
1826 Dunn Ave. 32218

Hours:

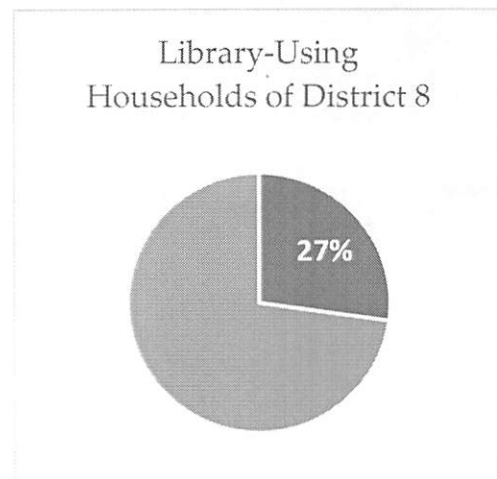
Monday: 1 p.m. - 9 p.m.
Tuesday: 1 p.m. - 9 p.m.
Wednesday: 10 a.m. - 6 p.m.
Thursday: 1 p.m. - 9 p.m.
Friday: 10 a.m. - 6 p.m.
Saturday: 10 a.m. - 6 p.m.
Sunday: 1 p.m. - 5 p.m.

Introduction

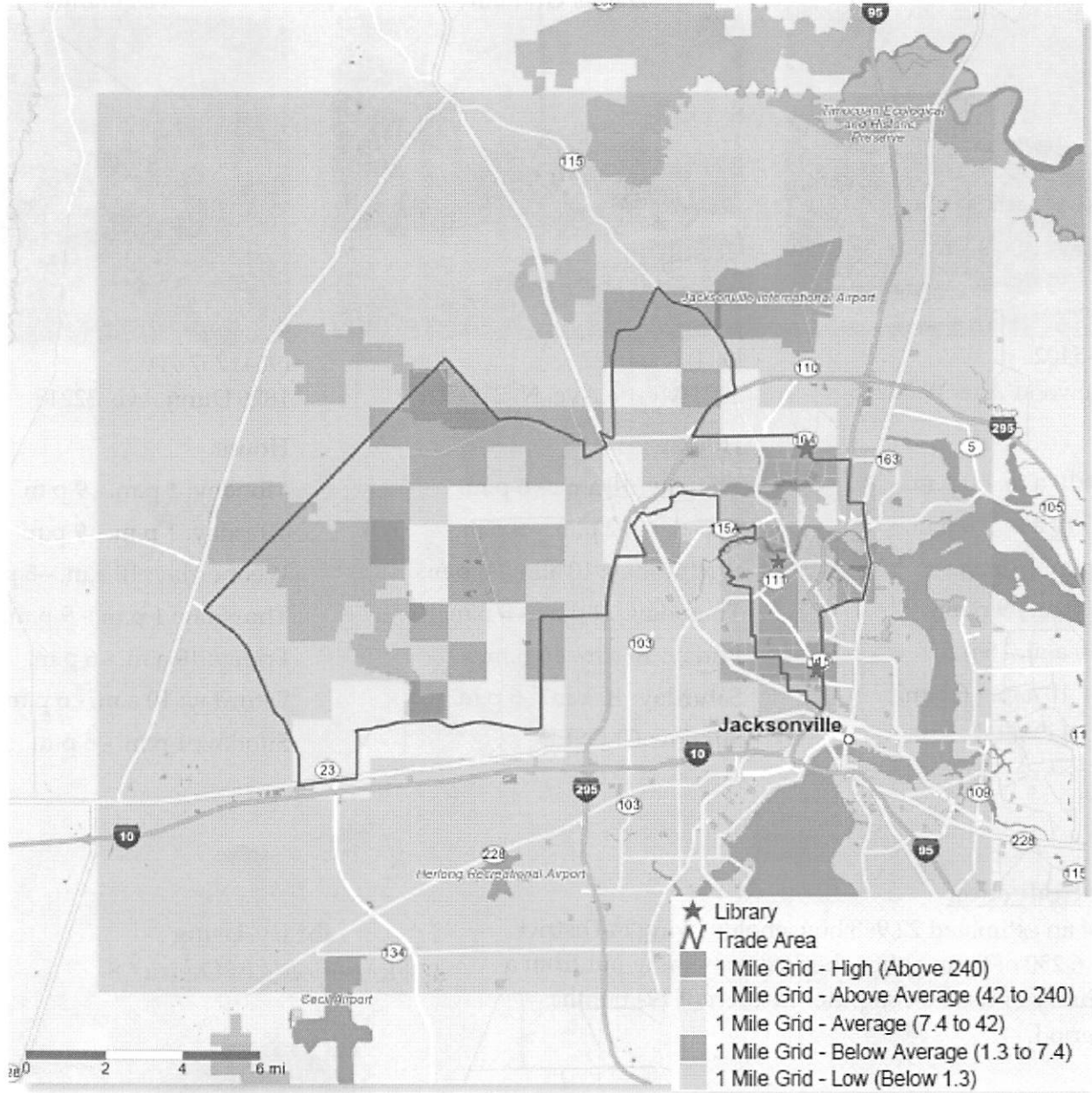
Of an estimated 22,963 households living in District 8, 6,250 of them either checked something out from a library or used a computer in a recent 12-month period.

The chart below shows the district divided into one-mile squares, with each square shaded by a color to indicate the number of households in that square mile that visited a library.

Not surprisingly, the areas of District 8 with higher population densities *and* libraries nearby are the areas where people are most likely to visit a library.



1 Mile Grid Map Themed by Count of Patron Households



Highlights of Usage Statistics of the Three Libraries in District 8

With 1,135 visitors per square foot YTD, **Graham is the fourth busiest library in the system for its size**, behind only Eastside, Westbrook, and Murray Hill. (With about 8,000 square feet, only three branches have a smaller footprint than Graham – Eastside, Murray Hill, and Westbrook.)

Highlands (35,326 square feet) and Bradham-Brooks (27,459) are among the largest branches. Only Pablo Creek (40,619), Southeast (54,881) and West (50,010) are larger.

While these branches do not loan as many materials as some of the suburban branches, residents are taking great advantage of the opportunity to use library computers. With 38,131 sessions through August this year, **Highlands customers have had the second most computer sessions year-to-date of any branch** (First is Webb-Wesconnett).

And more of the visitors to Graham and Bradham-Brooks are using those branches' computers than any other branch. They are the only two branches averaging more than four computer sessions per visitor this year so far.

With a month to go in the fiscal year, **residents have already used computers at these three libraries over 100,000 times.** It is necessary to add the 42,000+ Wi-Fi sessions at these three branches to get the full picture of the internet access that JPL is providing these communities. (With 13,470 Wi-Fi sessions YTD, Graham has the second most Wi-Fi sessions per square foot of any branch.)

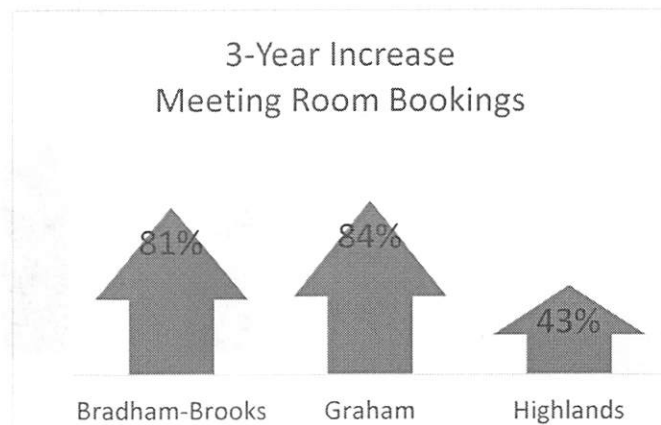
In fact, **these three branches together accounted for over 15% of computer and internet connections system-wide through August of this year.**

Promising Trends

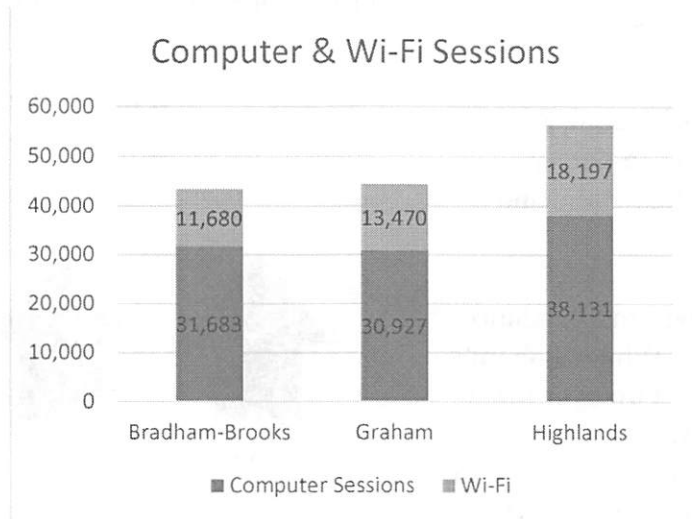
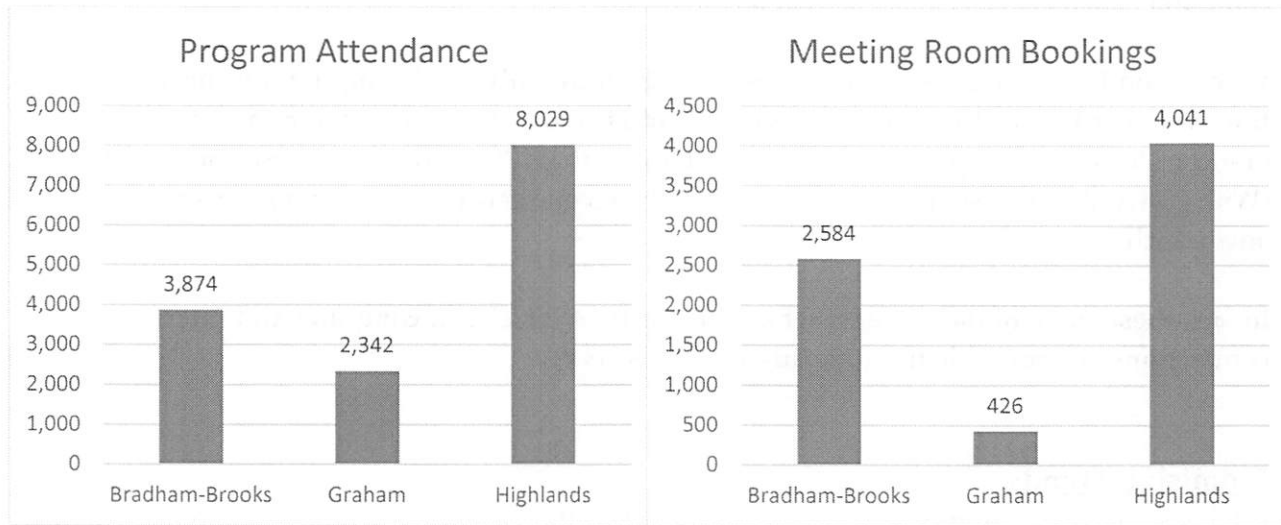
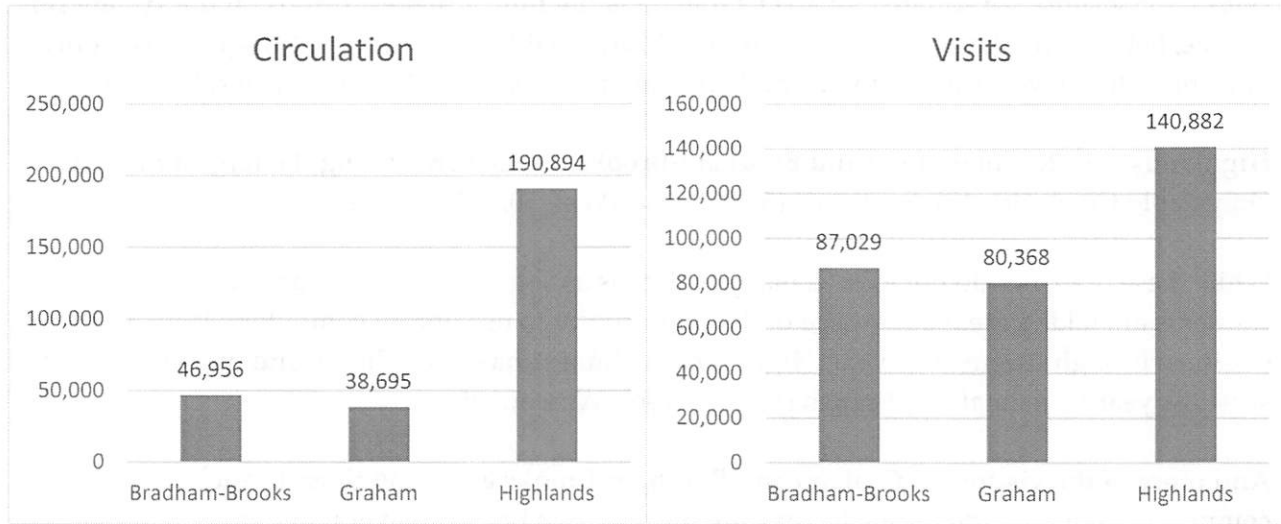
JPL helps build communities by bringing people together, and we are bringing people together in increasing numbers through our program offerings for all ages and by providing spaces for groups to hold meetings.

Over the last three years Meeting Room bookings are up 81% year-to-date at Bradham-Brooks, 84% at Graham, and 43% at Highlands

In that same period, program attendance is up 149% at Highlands. While Graham's program attendance is not up over three years ago, it is up 37% over last year. (Bradham-Brooks has not seen an increase in program attendance over the last three years.)



Summary of Basic Usage Statistics Year-to-Date



Dominant Household Attributes of District 8 Households

Experian, the consumer credit reporting agency, also provides profiles of populations in order to help businesses and other organizations to better understand the communities they serve. They classified all U.S. households into 71 Mosaic types representing similar behaviors and lifestyles. Of those types the highest percentage of households in District 8 are designated as **Urban Survivors**, described as “middle-aged and older singles and single parents established in modest urban settings.”

Key Features

- Modest budgets
- Racially diverse
- Entrepreneurial spirit
- Materialistic aspirations
- Modest educations
- Style on a budget

This household type makes up an estimated 21% of the households in this district and about the same percentage of JPL customers.

The second highest percentage of households, with 11% in the district, are classified as **Suburban Attainment**, defined as “upper middle-class couples and families living mainly in the expanding suburbs.”

Key Features

- Tech-wizards
- Politically liberal
- Power shoppers
- Status-seekers
- Tech-savvy
- Omni-channel shoppers

This mosaic type makes up a disproportionately high percentage of JPL customers in District 8, with 15%.

VETERAN'S RESOURCE GUIDE



CAREERSOURCE NORTHEAST FLORIDA SERVICE CENTERS

Our Service Centers offer a wealth of resources, including specialized Local Veterans Employment Representatives (LVER) and Disabled Veterans Outreach Program (DVOP) staff who work solely with the veteran population and can provide veteran applicant referrals.

Veterans can work with a veterans employment specialist at any of the centers to find jobs, acquire skills and education, plan a career, attend workshops, and take advantage of many other resources. CareerSource Northeast Florida provides the following core services:

- Initial Assessments
- Career Counseling
- Resume Writing
- Interviewing Skills
- Electronic Job Banks/Computer Access
- Job Vacancy Listings
- Job Search
- Job Placement
- Labor Market Information
- Financial Aid Information

SPECIALIZED VETERANS PROGRAMS & REFERRALS

THE VET CENTER—READJUSTMENT COUNSELING SERVICES

In Jacksonville—Florida call (904) 232-3621

The Vet Center provides readjustment services for veterans and their family members.

DEPARTMENT OF VETERANS AFFAIRS

www.va.gov

- VA Work Study Program
- VA Chapter 30 Education and Training Program
- VA Chapter 31 Rehabilitation Employment Program
- VA Home Loans
- Healthcare Benefits
- VA Jobs
- Business Opportunities
- Veterans Benefits For Children
- Dependents Educational Assistance Program
- VA Forms
- Veteran Service Organizations

EDUCATIONAL INFORMATION

www.ed.gov

- Grants
- Financial Aid
- Programs

TROOPS TO TEACHERS

www.proudtoserveagain.com

A veteran can receive up to \$5,000 to pay for teacher certification under \$10,000 bonus for teaching in a "high needs" school. Placement assistance and referral services are available to help identify employment opportunities and teacher certification.

**CAREERSOURCE NORTHEAST
FLORIDA OFFERS SPECIALIZED
PROGRAMS JUST FOR VETERANS.**



WE WORK WITH VETERAN'S EVERY DAY. HOW CAN WE HELP YOU?
Whether it's finding a job, launching a new career, or retooling your skills to jump-start an existing one, we've got what you need.

FLORIDA REGISTERED APPRENTICESHIP AND TRAINING PROGRAM

<http://www.fldoe.org/academics/career-adult-edu/apprenticeship-programs/openings-in-apprenticeship.html>

Applications for entry into this program are accepted as required by industry needs. Individuals can gain valuable on-the-job training and receive the necessary schooling to master a trade while earning a wage.

HELMETS TO HARDHATS

www.helmetstohardhats.org

Helmets to Hardhats is cosponsored by all fifteen Building and Construction Trades organizations, as well as their employer associations, which together represent about 82,000 contractors. Labor leaders have embraced the program, eager to help U.S. soldiers, sailors, Marines and airmen transfer their experience and can-do attitudes into secure jobs within the construction industry.

U.S. POSTAL SERVICE

www.usps.com/employment

If you are a recently discharged veteran (within 120 days of discharge) or a disabled veteran receiving VA disability benefits and are interested in a career with the U.S. Postal Service you can call (800) 275-87774 for employment information or you can visit their website.

THE E-VETS RESOURCE ADVISOR

<https://webapps.dol.gov/elaws/evets.htm>

The e-Vets Resource Advisor assist veterans preparing to enter the civilian job market. The website provides information on a broad range of topics, including job search tools and tips, employment openings, career assessment, education and training, benefits, and special services all available to veterans.

IMPORTANT NUMBERS FOR VETERANS

VA Benefits 800-827-1000
Health Benefits & Enrollment 877-222-8387
Education Benefits 888-442-4551
VA Life Insurance Center 800-669-8477
Debt Management Center 800-827-0648
Mammography 888-492-7844

Telecommunication
Device for the Deaf (TDD) 800-829-4833
CHAMPVA & Spina Bifida 800-733-8387
Headstone & Markers 800-697-6947
Gulf War Helpline 800-749-8387
Loan Guarantee
Eligibility Center 888-244-6711
Military Retirement Pay/SBP 800-321-1080
CAMPUS/TRICARE 800-444-5445
VA Clinic 904-475-5800



www.careersourcenortheastflorida.com

(904) 356-JOBS (5627)



CareerSource Northeast Florida is an equal opportunity employer/agency. Auxiliary aides and accommodations for people with disabilities are provided. FRS users dial 711.

LOCATIONS

Baker County

1184 South 6th Street
Macclenny, FL 32063
Phone: (904) 259-9309
Fax: (904) 259-7702

Clay County

1845 Town Center Blvd., Suite 150
Fleming Island, FL 32003
Phone: (904) 213-3888
Fax: (904) 278-5696

Duval County

Gateway

5000 Norwood Avenue, Suite 2
Jacksonville, FL 32208
Phone: (904) 924-1710
Fax: (904) 924-1725

Southside

11160 Beach Blvd., Suite 111
Jacksonville, Florida 32246
Phone: (904) 997-3100
Fax: (904) 425-6450

Downtown

215 N. Market Street, Suite 100
Jacksonville, FL 32202
Phone: (904) 798-9222
Fax: (904) 798-4759

Nassau County

96042 Lofton Square Court
Yulee, FL 32097
Phone: (904) 432-0009
Fax: (904) 277-7219

Putnam County

146 Comfort Rd.
Palatka, FL 32177
Phone: (386) 530-7089
Fax: (386) 682-3150

St. Johns County

525 State Road 16, Suite 109
St. Augustine, FL 32084
Phone: (904) 819-0231
Fax: (904) 516-9211

Fleet & Family Support Center

NAVSTA Mayport,
Building 1
Mayport, FL 32228
Phone: (904) 270-6600 x1721



CSNEFL-VRG-021317

630-CITY

Where to go when you need to know.

CITY OF JACKSONVILLE CUSTOMER SERVICE CENTER

630CITY.coj.net ^{or}
Myjax App*



Request a service
online, anytime, 24/7

*Available for iOS and Android Devices

904-630-2489



click
-or-
call

Monday-Thursday:
8 am - 5 pm
Friday: 8 am - 7 pm
Saturday: 8 am - 12 pm
Closed Sundays and Holidays

Help 630-CITY Promptly Meet Your Needs:

- Before contacting us, gather as much info as possible concerning your issue.
- Provide us with a street address or the closest intersection.
- When sending photos, two is better than one: a closeup and a zoomed out view that shows the surrounding area.



SCAN THIS QR CODE TO LEARN MORE ABOUT 630-CITY

CITY OF JACKSONVILLE
One City. One Jacksonville.



117 W. Duval St.
Jacksonville, FL 32202
904.630.CITY | 630CITY.coj.net

WE'RE HERE TO HELP YOU WITH



WASTE COLLECTION

Schedule collection of fires or appliances, and report missed waste collection. Get your collection schedule and learn about the collection standards.



BLIGHT

Report illegal dumping, snipe signs, overgrown grass, litter and trash on the right-of-way, and abandoned/unkept homes, buildings, or properties.



ROADS

Report potholes, road or sidewalk damage, flooding, or dead animal. Submit a public stormwater ditch maintenance request.



TRAFFIC SIGNALS

Report malfunctioning traffic signals, and missing or broken street signage.



PARKS

Learn more about scheduled activities. Rent a pavilion or community center. Report park maintenance issues.



TREES

Request tree trimming. Report a dead tree or tree down in road.



CATS OR DOGS

Report a stray/loose animal, dog barking, or animal cruelty. Learn more about pet adoptions and fostering opportunities.



OTHER

Report noise or odors. Request mosquito inspection. Find out your flood/evacuation zone and what to do during a hurricane.

SUBMIT A REQUEST | 904.630.CITY (2489) | 630CITY.COJ.NET

630-CITY Where to go when you need to know.



Mosquito Bite Protection in Florida

FloridaHealth.gov • Florida Department of Health

Not all mosquitoes are the same. Different mosquitoes spread different diseases and bite at different times of the day. Some mosquito species bite during the day, such as those mosquitoes that can spread chikungunya, dengue and Zika viruses. Other species of mosquitoes bite most often at dawn and dusk, including those that can transmit West Nile virus.

Mosquitoes can live indoors and will bite at any time, day or night.



Use Environmental Protection Agency (EPA)-registered insect repellents

Wear repellent when you are outdoors. Use products with active ingredients that are safe and effective.

- Always follow the product label instructions.
- Do not spray repellent on skin under clothing.
- If you use sunscreen, put sunscreen on first and insect repellent second.
- It is safe for pregnant or nursing women to use EPA-approved repellents if applied according to package label instructions.
- Learn more: www2.epa.gov/insect-repellents.



USE INSECT REPELLENT WITH ONE OF THESE ACTIVE INGREDIENTS

DEET →→

Picaridin (KBR 3023), Bayrepel and icaridin →→

Oil of lemon eucalyptus (OLE) or para-menthane-diol (PMD) →→

IR3535 →→

BRAND EXAMPLES*
Overseas brand names may vary.

Off!, Cutter, Sawyer, Ultrathon

Skin So Soft Bug Guard Plus

Repel

Skin So Soft Bug Guard Plus Expedition, Skin Smart

Higher percentages of active ingredient=longer protection

If you have a baby or child:

- Always follow product instructions when applying insect repellent to children.
- Spray insect repellent onto your hands and then apply to a child's face.
- Do not apply insect repellent to a child's hands, mouth, cut or irritated skin.
- Do not use insect repellent on babies younger than 2 months.
- Dress babies or small children in clothing that covers arms and legs.
- Cover cribs, strollers or baby carriers with mosquito netting.



Cover up with clothing

- Wear long-sleeved shirts and long pants.
- Mosquitoes can bite through thin clothing. Treat clothes with permethrin or another EPA-registered insecticide for extra protection.



Use permethrin-treated clothing and gear.

- Permethrin is an insecticide that kills mosquitoes and other insects.
- Buy permethrin-treated clothing and gear (boots, pants, socks, tents), or use permethrin to treat clothing and gear—follow product instructions closely.
- Read product information to find out how long the permethrin will last.
- Do not use permethrin products directly on skin.

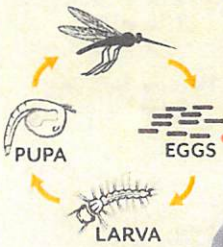
www.cdc.gov/features/StopMosquitoes

* The use of commercial names is to provide information about products; it does not represent an endorsement of these products by the Centers for Disease Control and Prevention or the U.S. Department of Health and Human Services.

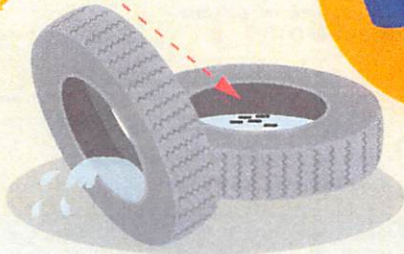
Keep mosquitoes **outside**



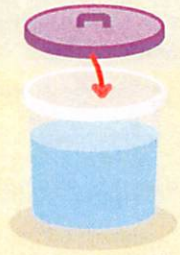
Stop mosquitoes from **breeding**



Mosquitoes breed by laying eggs in & near standing water.



As little as one teaspoon or bottle cap of water standing for more than one week is enough for mosquitoes to breed and multiply.



Around all buildings:

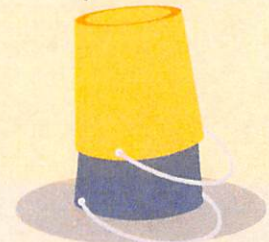
At least once a week, empty, turn over or cover anything that could hold water:

- tires
- buckets
- toys
- pools & pool covers
- birdbaths
- trash, trash containers and recycling bins
- boat or car covers
- roof gutters
- coolers
- pet dishes

At your house or business:
Put away items that are outside and not being used because they could hold standing water.



In your garden:
Keep flower pots and saucers free of standing water. Some plants, such as bromeliads, hold water in their leaves—flush out water-holding plants with your hose once a week.



Projects in Council District 8 Included in FY 2019-2023 CIP

CD	Dept	Program Area	Project Name	Total Cost	Prev Fund	FY 18-19	FY 19-20	FY 20-21	FY 21-22	FY 22-23	Beyond 5
08	PW	Roads / Infrastructure / Transportation	Ribault Scenic Drive Bridge Repair	\$350,000	\$0	\$350,000	\$0	\$0	\$0	\$0	\$0
08	PW	Roads / Infrastructure / Transportation	Moncrief Road Beautification (34th St to 45th St)	\$1,700,000	\$0	\$1,700,000	\$0	\$0	\$0	\$0	\$0
08	PW	Roads / Infrastructure / Transportation	Broward Road Improvements	\$350,000	\$0	\$0	\$0	\$0	\$0	\$0	\$350,000
08	PW	Environmental / Quality of Life	Pinehurst Cemetery Restoration	\$1,211,000	\$0	\$1,211,000	\$0	\$0	\$0	\$0	\$0
08	PW	Environmental / Quality of Life	Memorial Cemetery Assessment/Restoration	\$3,005,900	\$0	\$389,400	\$2,616,500	\$0	\$0	\$0	\$0
08	PW	Environmental / Quality of Life	Sunset Cemetery Assessment/Restoration	\$1,550,000	\$0	\$250,000	\$0	\$0	\$1,300,000	\$0	\$0
08	PW	Environmental / Quality of Life	Hillside Cemetery Assessment/Restoration	\$230,000	\$0	\$30,000	\$200,000	\$0	\$0	\$0	\$0
08	PW	Environmental / Quality of Life	Mt Olive Cemetery Assessment/Restoration	\$3,634,000	\$0	\$474,000	\$0	\$3,160,000	\$0	\$0	\$0
08	PW	Public Facilities	Highlands Library Roof Replacement	\$160,000	\$0	\$0	\$0	\$0	\$0	\$0	\$160,000
08	PL	Public Facilities	Urban Core Renewal/ 21st Century Urban Libraries	\$330,000	\$0	\$330,000	\$0	\$0	\$0	\$0	\$0
08	SH	Public Facilities	Homeland Security Narcotics & Vice Building	\$2,507,500	\$0	\$0	\$0	\$2,507,500	\$0	\$0	\$0
08	RP	Public Facilities	Carville Park & Pool	\$150,000	\$0	\$0	\$0	\$0	\$0	\$150,000	\$0
08	RP	Parks / Preservation Land / Wetland	Jacksonville Baldwin Rail Trail - Repave Trail	\$2,385,000	\$0	\$0	\$0	\$2,385,000	\$0	\$0	\$0
08	RP	Parks / Preservation Land / Wetland	Bert Maxwell Dredge	\$168,000	\$0	\$168,000	\$0	\$0	\$0	\$0	\$0
08	RP	Parks / Preservation Land / Wetland	Riverview Park Boat Ramp	\$168,000	\$0	\$168,000	\$0	\$0	\$0	\$0	\$0
08	RP	Parks / Preservation Land / Wetland	Ribault River Preserve Fishing Structure	\$67,200	\$0	\$67,200	\$0	\$0	\$0	\$0	\$0
1, 8, 10	PW	Public Facilities	Landscape Renovations at Jax Public Library	\$543,000	\$0	\$0	\$0	\$0	\$0	\$0	\$543,000
7, 8, 9, 10	PW	Environmental / Quality of Life	JAX Ash Site Pollution Remediation	\$191,611,212	\$172,292,425	\$1,000,000	\$4,250,000	\$4,850,000	\$1,750,000	\$2,250,000	\$5,218,787
8 & 10	PW	Roads / Infrastructure / Transportation	Bulls Bay Hwy at Commonwealth Intersection Imp	\$150,000	\$0	\$150,000	\$0	\$0	\$0	\$0	\$0
8 & 10	RP	Parks / Preservation Land / Wetland	Winton Drive Recreation Facility	\$4,600,000	\$0	\$500,000	\$2,050,000	\$2,050,000	\$0	\$0	\$0
Totals				\$5,087,600	\$0	\$10,816,500	\$14,952,500	\$3,050,000	\$2,400,000	\$6,271,787	\$0